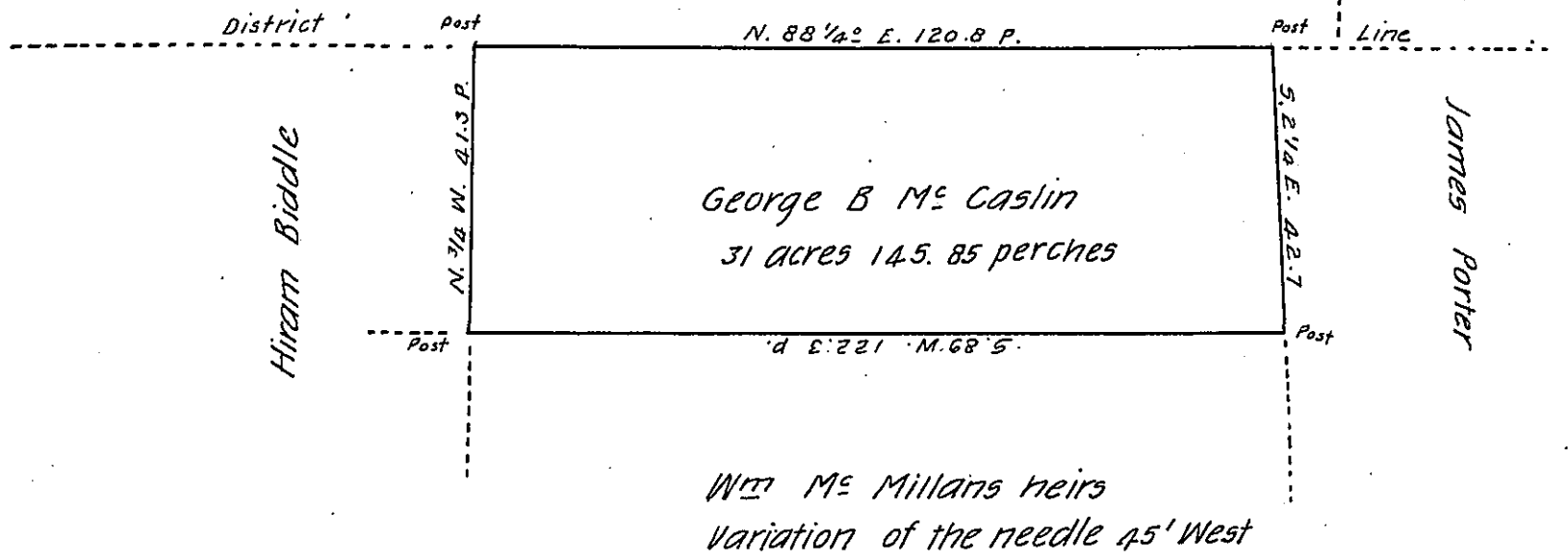


Donation Lands 3<sup>rd</sup> District  
 Lot No. 55 250<sup>ac</sup>  
 Kenedy M<sup>c</sup> Farland



Situate in Wilmington township Mercer County Surveyed for  
 George B. M<sup>c</sup> Caslin March 3<sup>rd</sup> 1857 in pursuance of a warrant granted  
 to the said George B. M<sup>c</sup> Caslin dated the 10<sup>th</sup> day of February 1857 - The  
 said M<sup>c</sup> Caslin having erected a cabin house thereon and resided therein

Bounded as above described

To John Rowe Esq S.G. }  
 David Angel. }  
 Hiram Biddle  
 Chainbearers

Jacob Zahniser  
 County Surveyor  
 Mer. Co.

Sworn.

IN TESTIMONY that the above is a copy of the original remaining on file in  
 the Department of Internal Affairs of Pennsylvania, made  
 conformably to an Act of Assembly approved the 16th day of  
 February, 1833, I have hereunto set my Hand and caused  
 the Seal of said Department to be affixed at Harrisburg,  
 this third day of October 1906

*Luca P. Brown*  
 Secretary of Internal Affairs.